



# Sify Data Center: NOIDA 02 CAMPUS

**ADDRESS:**

NB-11,12,13, Sector – 132, Gautam Budh Nagar,  
Noida, Uttar Pradesh - 201304, India.

## Tried. Tested. Trusted.

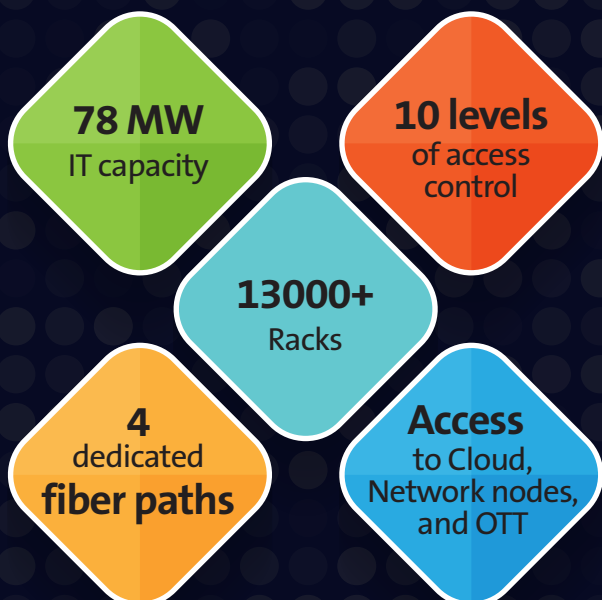
*For over 22 years now  
India's leading digital infrastructure partner*

## Sify: The Data Center Pioneer!

As a pioneer Data Center service provider in India, Sify holds an undeniable advantage in offering every data center service - be it colocation, edge computing, network services, cloud services, digital services or system integration services. The technologies implemented in our data centers are an outcome of many years of data center operations and setting new industry benchmarks on par with the best practices in the West and tailored to the Indian ICT ecosystem. All our data centers are strategically located across different geographic locations, are concurrently maintainable and complement each other as data center or disaster recovery center.

As part of the Noida campus expansion, Sify has added its second Hyperscale Data Center campus in Delhi NCR, Noida 02 campus. Noida 02 will have 3 towers with a total capacity of **78 MW, 13000+ racks** & a dedicated on-premise **220 KV** substation for high availability. Noida 01 and Noida 02 will be interconnected with **4 diverse** fiber paths which will provide direct connectivity to Hyperscalers, OTT players and Cloud Connect Nodes. The Noida 02 campus has multiple layers of security with **10** levels of access control from entry to cage. The campus has **4 secure** underground conduits with concrete enclosure at 2000 mm depth for high capacity and resilience.

*Lorem ipsum*



# Data Center Campus: Advantages

Hyperscale campus with **78 MW** IT capacity and **13000+** racks.  
**3 Towers** of 26 MW each

**4 Fiber entry paths** into the Data Center campus, with diverse fiber paths to each building

**6300 mm** floor to floor height

**Interconnected** to Noida 01 Data Center with access to Cloud, Network nodes, and OTT

**Multiple options** for Private power and Renewable power

**Built-to-Suit** towers to single cabinet deployment

**4 clear access paths** to the Data Center campus from the main road, enables easy logistics movement

**2100 kg/sqm** floor load bearing capacity

**10 Levels** physical & electronic security.  
**K4** rated perimeter

On-premises **220 KV** GIS substation

## Data Center Campus: Key Facts



### Data Center Shell Building

- **RCC shell and core Floors** G+7
- **Data Hall Room Height:** 6300 mm slab to slab. 5100 mm clearance from slab to bottom of beam.
- **Floor Type:** Raised, 900 mm.
- **Structural Design:** IS 456:2000, Importance Factor 1.5.
- **Structural Floor Loading:** 2100 kg/sqm.
- **Freight Elevators:** 2 freight elevators with 4-ton capacity.
- **Fire Rating of Walls & Doors:** 2 hours.



### Electrical

- **Utility feed configuration:** Onsite electrical substation on High Voltage feeder.
- **Design Power Capacity:** Designed for 78 MW IT capacity.
- **Independent Floor Design:** 4320 kW per floor power deployment. 2 x 2520 kW power PODs.
- **Power Density:** Average Power density of 8-13 kW per rack.
- **Transformer/Generator Configuration:** N+2, N+2C, N+N/3.
- **Downstream Power Configuration:** N+N downstream power distribution with overhead bus bars.
- **Onsite Fuel Storage:** 30 hours, with 2 geo-diverse fuel re-supply contracts.

# Data Center Campus: Key Facts



## Building Management Systems

- **Building Management:** Integrated building automation system with PLC SCADA.
- **Physical Security:** Perimeter protection with Electric fence and Intrusion detection, Access controlled Gates and Hydraulic crash guards, Security control room, X-ray Baggage scanner, 24x7 security guard service.
- **Access Control:** Smart card and biometric.
- **Video Surveillance:** 24x7 for all critical areas, retention for 90 days.
- **Fire Detection:** Addressable smoke detectors and aspirating smoke detectors for early warning.
- **Fire Suppression:** Novec® 1230 fire suppression system for Data Center and electrical rooms. Option for pre-action Water sprinklers available.



## Cooling

- **Chiller:** Air cooled chillers with high water temperature and adiabatic cooling accessories. N+2 redundancy.
- **Environment:** Temperature and Humidity as per ASHRAE standards.
- **Containment:** Hot or Cold Aisle Containment.



## Network

- **MMR:** Dual meet me rooms for telecom fiber links; N+N power with UPS and 5 minutes battery backup.
- **Carrier Neutral:** Multiple IXs, IP Transit POPs, Multiple Telecom MUXs.
- Four telecom entry paths to the MMR.
- MDF (Network Closet) in every floor, connected to MMR via 4 network risers.



## Proposed Certifications



Fast track your digital transformation journey with a more agile, resilient, scalable, digital-ready IT infrastructure supported by a trusted partner who is charting India's digital growth story.

### Sify Data Centers

Mumbai | Noida | Hyderabad | Bengaluru | Chennai | Kolkata

[www.sifytechnologies.com](http://www.sifytechnologies.com) [marketing@sifycorp.com](mailto:marketing@sifycorp.com)

